

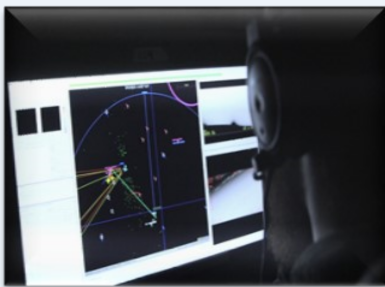
# Joint Interagency Task Force South (JIATF-S)

---



## Welcome Aboard Guide

The Southernmost Post





**DEPARTMENT OF DEFENSE**  
JOINT INTERAGENCY TASK FORCE SOUTH  
PO BOX 9051  
NAVAL AIR STATION, KEY WEST, FLORIDA 33040-9051

JIATFS-00

MEMORANDUM FOR RECORD

SUBJECT: Welcome Aboard

1. On behalf of all the service-members, civilians, and partner-nation members, we would like to welcome you to Joint Interagency Task Force South (JIATF-S). We are delighted to have you join our team of teams.
2. I believe you will find duty here challenging because of the many complexities in fighting the international war on drugs. Our operational environment is dynamic, ever changing, and most likely very different from anything you have encountered before. This joint interagency command is unique in that every armed service and many civilian law enforcement agencies fill important roles in planning and executing our mission.
3. I hope your tour will be a personally satisfying and professionally rewarding experience. You will also find the pace of island life pleasant, with many cultural and recreational activities available in Key West.
4. You will be assigned a sponsor. Your sponsor will contact you soon with more details to assist with your relocation. If you have any issues with contacting your sponsor, please contact our J1, Manpower and Personnel Directorates for assistance at (305) 293-5346 or DSN 483-5346 or [southcom.key-west.jiatfs-cg.list.sponsor-coordinator@mail.mil](mailto:southcom.key-west.jiatfs-cg.list.sponsor-coordinator@mail.mil).
5. If you have questions about any aspect of where you will work or live, do not hesitate to contact your sponsor. Again, welcome to JIATF-S.

//ORIGINAL SIGNED//  
DOUGLAS M. FEARS  
Rear Admiral, U.S. Coast Guard  
Commander

# **Table of Contents**

**Section 1: JIATF-S**

**Section 2: Local Military Installations**

**Section 3: Basics for New Military Reports**

**Section 4: Area Information**

**Section 5: Local Area Resources**

## Section 1: JIATF-S

### Welcome Aboard

The Joint Interagency Task Force South (JIATF-S) is a multiservice, multiagency task force based at Naval Air Station Key West (Truman Annex), Key West, Florida. It conducts counter illicit trafficking operations, intelligence fusion and multi-sensor correlation to detect, monitor, and handoff suspected illicit trafficking targets; promotes security cooperation; and coordinates country team and partner nation initiatives in order to defeat the flow of illicit traffic. JIATF South is a subordinate command to United States Southern Command and is led by a Coast Guard Flag Officer.



### Check-In

All newly arriving service-members, DoD Civilians, and other personnel with orders to report to JIATF-S will first need to report to Naval Air Station Key West Truman Annex, FL.

### Directions

#### Key West Airport to NAS Truman Annex, FL

Exit the Airport and turn Right onto South Roosevelt Blvd (A1A) - 1.3 Miles  
South Roosevelt Blvd with turn slightly Right and becomes Bertha Street - 0.2 Miles  
Turn Left onto Atlantic Blvd - 0.5 Miles  
Turn Right on White Street - 0.5 Miles  
Turn Left onto United Street - 0.7 Miles  
Turn Right onto Whitehead Street - 0.4 Miles  
Turn Left onto Petronia Street - 0.3 Miles (Look for a Soccer Field)  
The NAS Truman Annex Gate will be on your Left.

#### Mainland Florida to NAS Truman Annex, FL

Take U.S. 1 to Key West  
As you Enter Key West Island, stay in the right lane and turn Right on North Roosevelt Blvd - 2.6 Miles  
North Roosevelt Blvd turn into Truman Ave - 1.1 Miles  
Turn Right onto Fort Street - 0.2 Miles  
Turn Left onto Petronia Street - 0.1 Miles (Look for a Soccer Field)  
The NAS Truman Annex Gate will be on your Left.

## **JIATF-S History**

JIATF South has been operating since 1989. In response to a need for unified command and control of drug interdiction activities, the FY 1989 National Defense Authorization Act designated the Department of Defense as the lead agency for the detection and monitoring program targeted against the aerial and maritime traffic attempting to bring drugs into the United States. Commander Joint Task Force FOUR (CJTF-4) in Key West, FL, Commander, Joint Task Force FIVE in Alameda, CA and Commander, Joint Task Force 6 in El Paso, TX were established to direct the anti-drug surveillance efforts in the Atlantic/Caribbean, Pacific, and Mexico border areas respectively. Presidential Decision Directive 14 of 3 October 1993 led to a reorganization of U.S. military anti-drug organization.

On 7 April 1994, Dr. Lee Brown, Director of the Office of National Drug Control Policy, signed the National Interdiction Command and Control Plan which directed establishment of three national interagency task forces (JIATF East in Key West, Florida; JIATF South in Panama; and JIATF West in Alameda, California).

On 1 June 1997, the Commander in Chief U. S. Southern Command expanded his area of responsibility to include the Caribbean and the waters bordering South America, and assumed command and control of JIATF East. In compliance with the 1979 Panama Canal Treaty and the necessity to complete the military drawdown in Panama by the end of 1999, the decision was made to merge JIATF South and JIATF East into one organization. Transfer of the JIATF South mission to the merged JIATF was completed on 1 May 1999.

The interagency concept of the task force is illustrated by the leadership composed primarily of representatives from the Department of Defense and U.S. Coast Guard. Other assigned agencies include Customs and Border Protection (CBP), the Drug Enforcement Administration (DEA), National Security Agency (NSA), Central Intelligence Agency (CIA), Federal Bureau of Investigation (FBI), Defense Intelligence Agency (DIA), National Geospatial Intelligence Agency (NGA), and Homeland Security Investigations (HSI). 20 countries have Liaison Officers assigned to JIATF-S. The result is a fully integrated, international task force organized to capitalize on the force multiplier effect of the various agencies and countries involved.

The following are our current leadership:

**Director: Rear Admiral Douglas Fears, USCG**

**Deputy Director: Rear Admiral Michael S. Sciretta, USN**

**Chief of Staff: Captain David Burke, USN**

**Command Master Chief: CMC Henry J. Audette, Jr., USCG**

## Section 2: Local Military Installations

### Naval Air Station (NAS) Boca Chica Field

Boca Chica Field has the Pass and ID office to obtain passes for visitors on all installations. There is a DEERS office, post office, gas station, and several MWR facilities. More Information visit : [www.cnlic.nay.mil](http://www.cnlic.nay.mil)

### Sigsbee Park

Naval Station Sigsbee offers housing, childcare, Sigsbee Charter School, NEX, commissary, and several MWR services.

### Trumbo Point

USCG Sector Key West is located on the eastern end of the NAS Key West base. There is a galley, fitness center, USCG Clinic, and DEERS office on the USCG portion of the base. Trumbo Point has housing, vacation lodging, Fly Navy hotel and Flying Conch Lounge, and a pool.

### Truman Annex

JIATF-S is located on Truman Annex. There is housing, lodging, a beach, fitness center, and restaurant.

### Coast Guard Sector Key West

Sector Key West can trace its history back to 1824 when a 63-foot schooner named Florida sailed into the Port of Key West, establishing a permanent station in Key West. Working for the Key West Collector of Customs, the Florida and its crew collected maritime tariffs, chased pirates, prevented smuggling and rescued those in distress at sea. Today, the Sector Commander performs the duties of Search and Rescue (SAR) Mission Coordinator (SMC), Captain of the Port (COTP), Federal Maritime Security Coordinator (FMSC), Federal On-Scene Coordinator (FOSC), and Officer in Charge of Marine Inspection (OCMI). Sector Key West has a unique area of responsibility; 55,000 square miles that borders the territorial seas of Cuba and the Bahamas. For more information visit their website at: <http://www.uscg.mil/d7/sectKeyWest/>

**See the NAS Key West newcomers guide for more detailed information on all the facilities and services listed above.**



## Section 3: Basics for New Military Reports

### Housing

The Family Housing options at NAS Key West is Privatized/Public Venture (PPV) housing on-base, managed by Balfour Beatty Communities <http://www.naskeywesthomes.com>. If you elect on-base housing you will forfeit your whole BAH. The Single Sailor program splits rent between room-mates. You may be billed for electric based on usage. Internet and cable are on the member to arrange. See the NAS Key West Welcome guide, page 9, for details.

For all members requesting on-base housing, you will need to complete a housing application, which consist of: Housing Application; Copy of PCS Orders; DD Form 1746, Certification of Bona Fide Family Members (via): USN Emergency Data Application (Page 2); USMC/NAVMC 10922; USA/USAF DD93; or USCG-4170.

If you choose to rent on the economy be prepared to pay first month, last month, and deposit. Move in costs can be anywhere from \$4500 to \$9500.

Temporary lodging is available on several installations.

[get.dodlodging.net/properties/Key-West-Vacations-Rentals](http://get.dodlodging.net/properties/Key-West-Vacations-Rentals) (305) 293-5000/5001

[www.navy-lodge.com/key-west](http://www.navy-lodge.com/key-west) (305) 292-7556

<https://ngis.dodlodging.net/properties/Key-West-NAS> (305) 851-5780

<https://get.dodlodging.net/properties/Key-West-Campground> (305) 293-4432

Navy Housing Referral Office- 305-293-4467

BAH Calculator: <https://www.defensetravel.dod.mil/site/bahCalc.cfm>

### Childcare

There is a Child Development Center and MWR Youth Center on board NAS Key West. MWR Youth Center operates the School Age Care program and Youth Center. The School Age Care Program provides before and after school care as well as all day care on select no school days and school breaks. The Youth Center provides programs for teens. <https://www.navy.mwrkeywest.com/programs/40673bd4-1a40-47bf-91ce-370aaa771661>

### Education

**Elementary School**—There are quite a few elementary schools in the Key West area. Please visit the link below to attain further information: <https://www.keysschools.com>

Sigsbee Charter School is located on NAS Key West Sigsbee Annex, and covers Voluntary Pre-Kindergarten to 8th grade. Visit the following link for more information: <http://www.sigsbee.org/>

### High School

Key West High School is the main high school in the lower keys. Visit the following link for more information: <https://www.keysschools.com/kwhs>

### College

College of the Florida Keys and Saint Leo University (Boca Chica Naval Base) are the two lower keys colleges. Saint Leo University bases out of NAS Boca Chica and offers traditional and online courses for service members, civilians, and retirees. Saint Leo University accepts the Post 9-11 Montgomery GI Bill. Tuition Assistance is accepted at both facilities as payment for classes as well. Visit the following links for more information:

<https://www.saintleo.edu/key-west-education-center> & <http://www.fkcc.edu/>

### Medical Care

Key West has a fully capable medical staff which works with the Key West Naval Branch Medical Clinic. The Key West Naval Branch Medical Clinic has an optometry clinic, dental clinic, standard medical care clinic, and pharmacy. The Navy Medical Clinic is located on Key West. They can treat Active Duty members, dependents, retirees, and veterans. There is one main hospital with an emergency room- Lower Keys Medical Center: <http://www.lkmc.com/default.aspx>. Please keep in mind that medical resources in Key West are limited and for serious or rare conditions, members and their families may need services and care in Miami.

For Coast Guard members, the medical clinic is located at Sector Key West. The phone number is 305-292-8715. Dental care is provided through Key West Naval Branch Clinic.





## Section 4: Local Area Information

### Hurricane Season

Hurricane season is June thru November. When a hurricane threatens the Keys, active duty military must prepare for heavy weather according to the Key West Hurricane Plan. The JOC HUREVAC teams COOP to Tampa, FL. Everyone else evacuates to Orlando (mandatory for active duty, highly encouraged for dependents). The communication for hurricane season is passed through a phone tree system. You can find more information on the Ready.gov website: <https://www.ready.gov/hurricanes>

### JIATFS Facebook groups:

[JIATFS Family Community](#)

JIATF South watchfloor personnel (For J3 Personnel. Request from Sponsor)

NAS KEY WEST

<a href="#">Career One Stop</a>	<a href="#">Florida Keys &amp; Key West Other Places of Worship</a>
<a href="#">Chamber of Commerce</a>	<a href="#">Monroe County School District Information</a>
<a href="#">City of Key West</a>	<a href="#">Monroe County Sheriff's Office</a>
<a href="#">Florida Key and Key West Tourism Information</a>	<a href="#">Monroe County Government Offices</a>
<a href="#">National Weather Service</a>	<a href="#">NAS Key West MWR</a>

# **Joint Interagency Task Force South (JIATF-S)**

DEKALB AVENUE, NAVAL AIR STATION TRUMAN ANNEX  
KEY WEST, FLORIDA 33040

Phone: 305-293-5346  
Email: [southcom.key-west.jiatfs-cg.list.sponsor-coordinator@mail.mil](mailto:southcom.key-west.jiatfs-cg.list.sponsor-coordinator@mail.mil)